

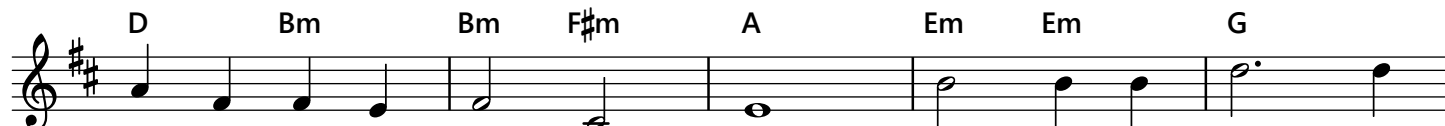
Sancte venite, Corpus Christi sumite

Draw Nigh and Take the Body of the Lord

John M. Neale / GUSTATE



1. Draw nigh and take the bod - y of the Lord, and drink the
2. Sal - va - tion's giv - er, Christ the on - ly Son, by that his
3. Vic - tims were of - fered by the Law of old that, in a
4. Ap - proach ye then with faith - ful hearts sin - cere, and take the
5. with heav'n - ly bread makes them that hun - ger whole, gives liv - ing



1. ho - ly blood for you out - poured; saved by that bod - y,
2. Cross and blood the vic - t'ry won; of - fered was he for
3. type, cel - es - tial mys - t'ries told; he, ran - som - er from
4. safe-guard of sal - va - tion here. He that in this world
5. wa - ters to each thirst - y soul. Al - pha and O - me -



1. hal - lowed by that blood, where - by re - freshed, we of - fer thanks to God.
2. great - est and for least, him - self the vic - tim and him - self the priest.
3. death and light from shade, giv - eth his ho - ly grace, his saints to aid.
4. rules his saints, and shields, to all be - liev - ers life e - ter - nal yields;
5. ga, to whom shall bow all na - tions at the doom, is with us now.

Inspiration: "Sancte venite, Corpus Christi sumite" from the "Antiphony of Bennchar", 7th cent.
Lyrics: 10.10.10; John Mason Neale, 1818-1866, in his "Mediaeval Hymns and Sequences", 1851.
Music: GUSTATE; Irish.